

SHARED EXPERTISE FOR A SINGLE APPLICATION

Partners for 150 years, the two entities maintain close relationships with local authorities, which they are proud to support, every day, in their development.

Recognized specialists in the fields of energy, water and waste, GDF SUEZ and SUEZ ENVIRONNEMENT have brought together their respective expertise in order to stay ahead of the curve in technological advancement and create an original tool for city management: **Cit'Ease™**.

GDF SUEZ

BY PEOPLE FOR PEOPLE

GDF SUEZ develops its businesses (power, natural gas, energy services) around a model based on responsible growth to take up today's major energy and environmental challenges: meeting energy needs, ensuring the security of supply, fighting against climate change and maximizing the use of resources.

The Group provides highly efficient and innovative solutions to individuals, cities and businesses by relying on diversified gas-supply sources, flexible and low-emission power generation as well as unique expertise in four key sectors: independent power production, liquefied natural gas, renewable energy and energy efficiency services.

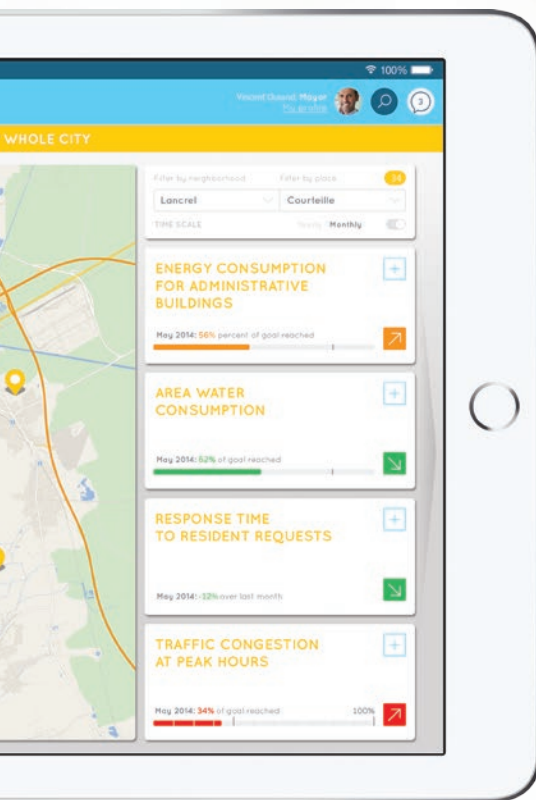
The Group employs 147,400 people worldwide and achieved revenues of 81.3 billion in 2013.



SUEZ ENVIRONNEMENT and its subsidiaries are committed to meeting the challenge of protecting resources by bringing innovative solutions to millions of people and to the world of industry.

SUEZ ENVIRONNEMENT supplies drinking water to 92 million people, wastewater services to 65 million people and provides waste collection services to 52 million people.

With 79,550 employees, SUEZ ENVIRONNEMENT is a world leader exclusively dedicated to the water and waste businesses and with a presence on five continents. SUEZ ENVIRONNEMENT generated total revenues of 14.6 billion in 2013.



cit'ease™
FOR EASIER CITY LIFE

FOR MORE
INFORMATION



Cit'Ease™ adapts itself to local authorities' current situations. Different levels of service are available, from the generic version to solutions built from scratch.

The three main steps to determine your needs are:

- 1 Finding out what functions you need to achieve your goals.
- 2 Identifying existing data sources on the ground, to assess how much data you still need.
- 3 Determining the level of connectedness between the information systems and Cit'Ease™.

TO LEARN MORE:

www.citease.net
contact@citease.net



GDF SUEZ

BY PEOPLE FOR PEOPLE

cit'ease™
FOR EASIER CITY LIFE

20140832 - Design and production: Kormi - www.kormi.fr - Photo credits: Fotolia - GDF SUEZ, SUEZ ENVIRONNEMENT



GDF SUEZ

BY PEOPLE FOR PEOPLE

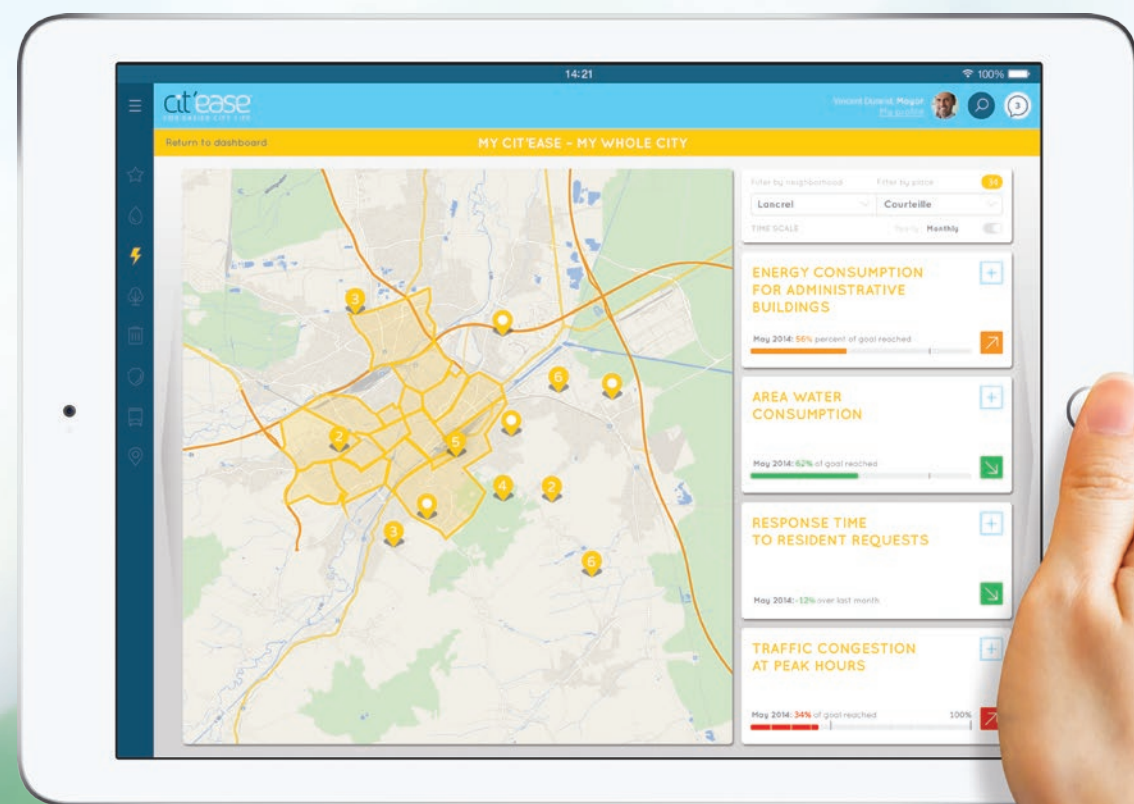
cit'ease™ PUTS THE RIGHT INFORMATION IN THE RIGHT HANDS AT THE RIGHT TIME

AN APPLICATION FOR ELECTED OFFICIALS AND YOUR CITY'S SERVICES

Every day, everyone needs specific and sometimes detailed information to make decisions based on all the facts.

Cit'Ease™ offers to collect all of your city's data, to connect it and to make it easier to manage in real time. Every question has its answer, and every situation can be analyzed. That's true for all your city's skills and services.

Collecting and parsing this data will make it possible to set up predictive monitoring capabilities.



SEE YOUR CITY IN A NEW WAY BY INVOLVING ALL OF ITS PARTICIPANTS

To help you benefit from your area's data, Cit'Ease™ provides you with:

- An open platform that can receive data from **GDF SUEZ, SUEZ ENVIRONNEMENT** and any other city actor (residents, open data, service providers, local businesses, etc.).
- External functions (for example, for a business that wants to improve the application with information or a service).
- A personalized platform, tailored to the specifics of your city and adapted to the current situation.
- Free access to data, on a secure application.

REINFORCING THE LINKS BETWEEN THE CITY AND ITS RESIDENTS

Cit'Ease™ goes beyond basic data collection.

It's also an interactive application that lets residents get involved in different ways and to adopt responsible behaviors.

From individual actions to the common good, Cit'Ease™ helps create a positive dynamic between all those involved in the city.



A SMART SERVICE FOR THE CITY OF TOMORROW



CIT'EAZEN™, AN APPLICATION AVAILABLE THROUGH CIT'EASE™, LETS CITIZENS REPORT MINOR INCIDENTS AND MALFUNCTIONS IN THEIR CITY... AND IN DOING SO, TO TAKE ON A NEW ROLE IN THEIR DAILY LIVES.

